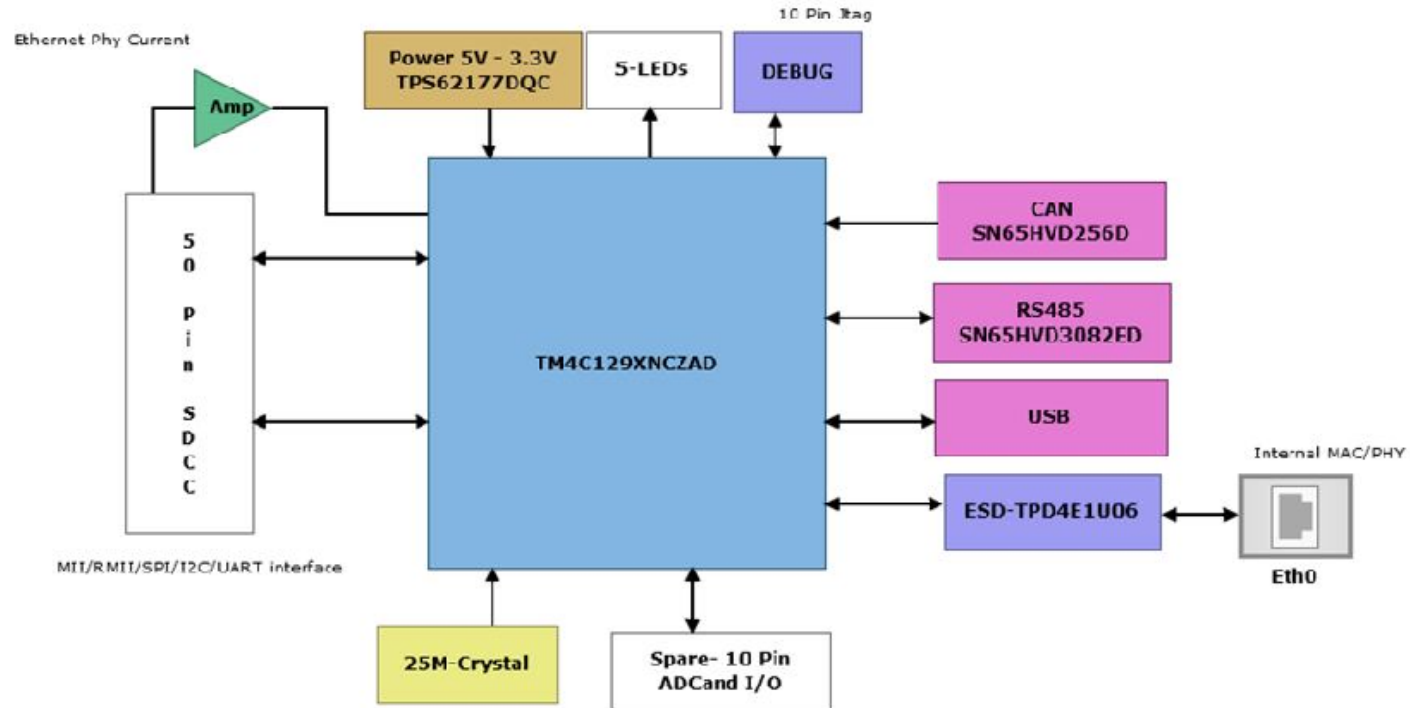
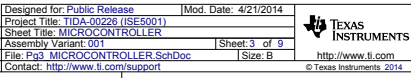
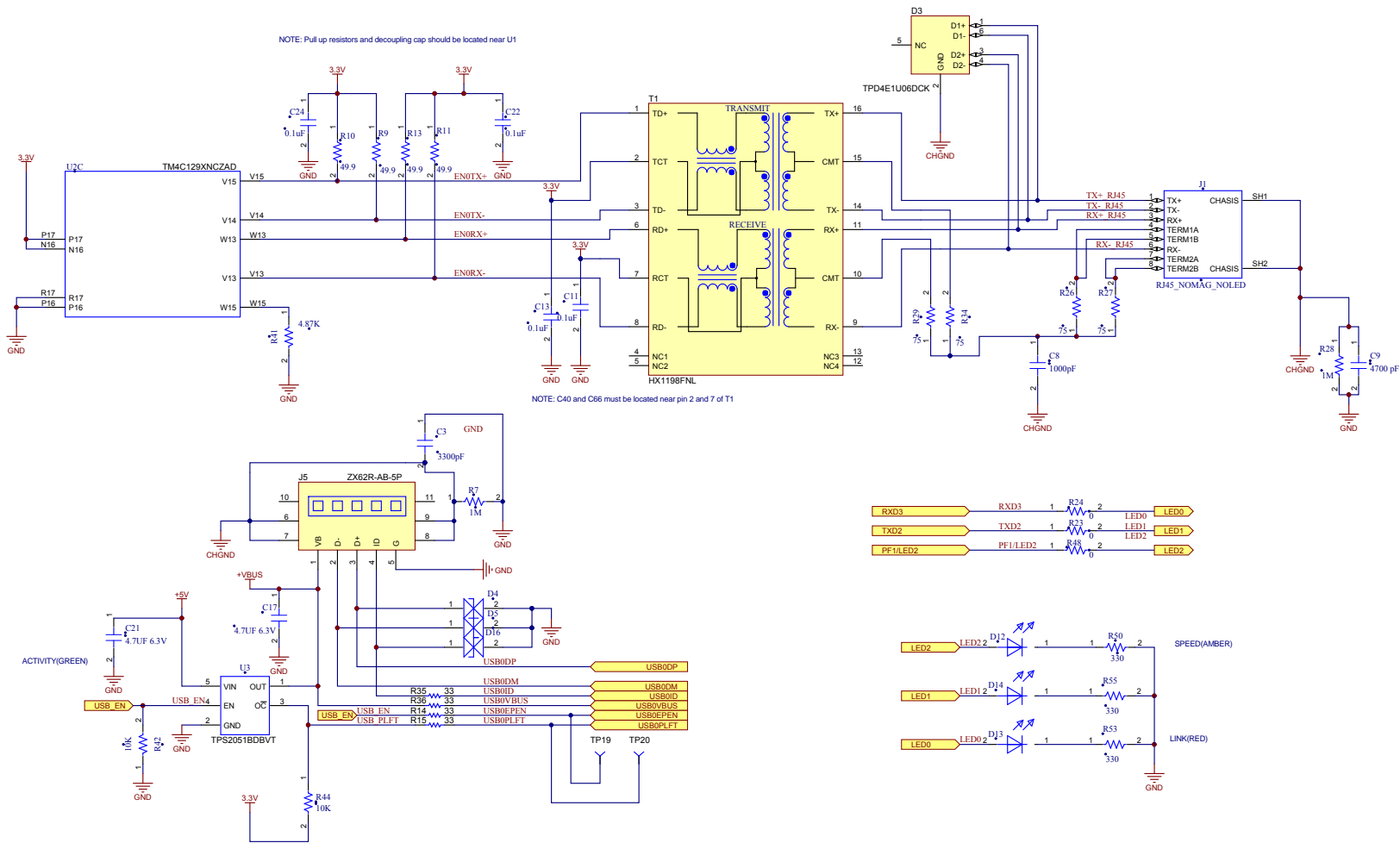


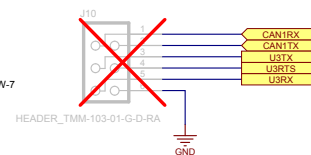
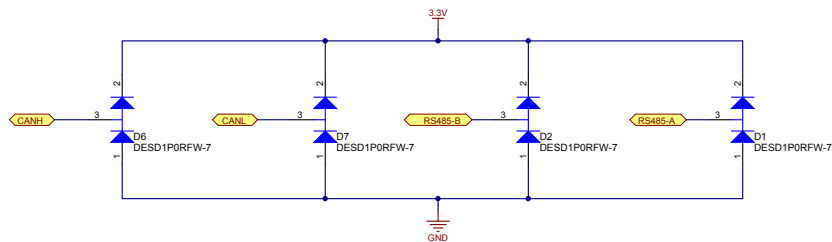
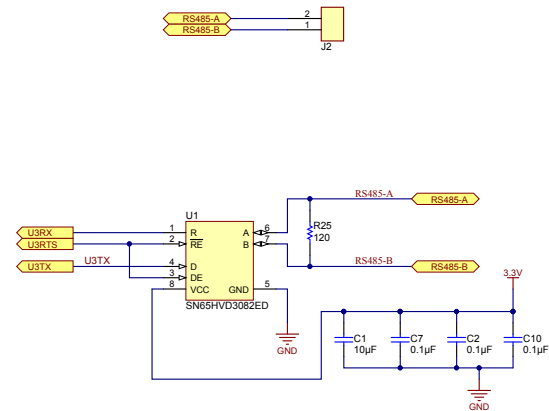
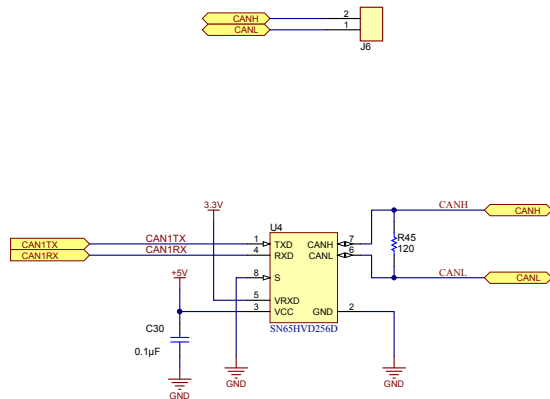
Tiva MCU based Gateway

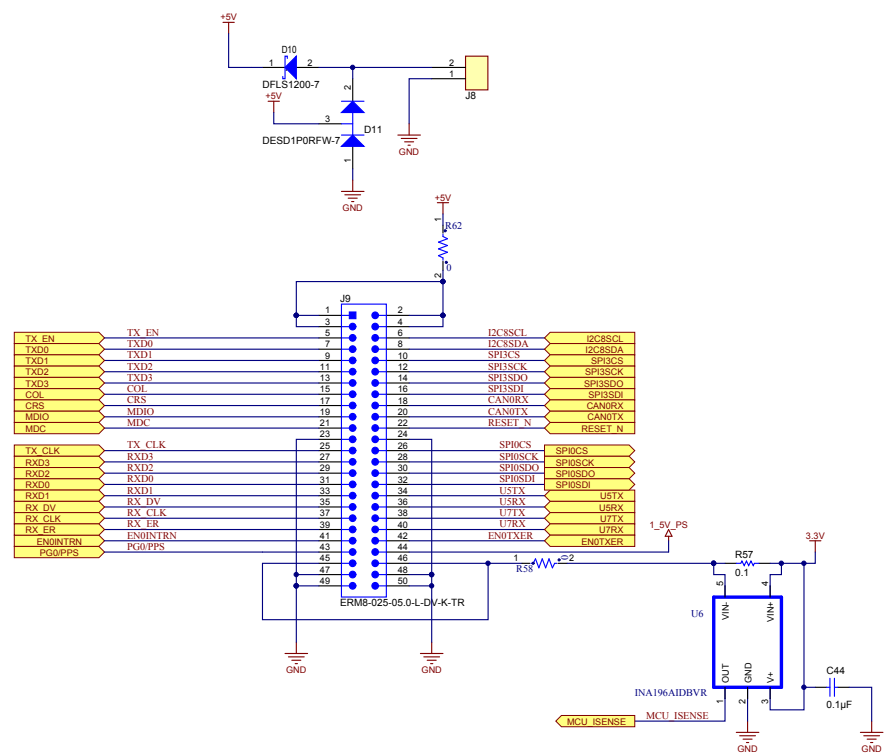


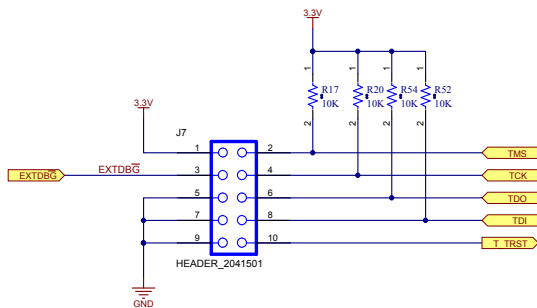
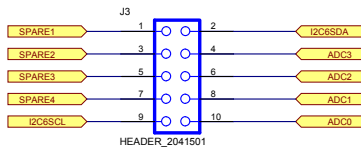
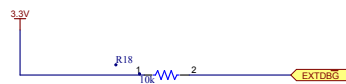
Texas Instruments and/or its licensors do not warrant the accuracy or completeness of this specification or any information contained therein. Texas Instruments and/or its licensors do not warrant that this design will meet the specifications, will be suitable for your application or fit for any particular purpose, or will operate in an implementation. Texas Instruments and/or its licensors do not warrant that the design is production worthy. You should completely validate and test your design implementation to confirm the system functionality for your application.











Texas Instruments and/or its licensors do not warrant the accuracy or completeness of this specification or any information contained therein. Texas Instruments and/or its licensors do not warrant that this design will meet the specifications, will be suitable for your application or fit for any particular purpose, or will operate in an implementation. Texas Instruments and/or its licensors do not warrant that the design is production worthy. You should completely validate and test your design implementation to confirm the system functionality for your application.

Number: XX###	Rev: E1	Designed for: Public Release	Mod. Date: 4/21/2014
SVN Rev.: Not in version control		Project Title: TIDA-00226 (ISE5001)	
Drawn By:		Sheet Title: SPARE AND DEBUG	Sheet 8 of 9
Engineer:		File: Pcb_SPARE_AND_DEBUG_SchDoc	Size: B
		Contact: http://www.ti.com/support	



© Texas Instruments 2014

H1 NY PMS 440 0025 PH H2 NY PMS 440 0025 PH H5 NY PMS 440 0025 PH H6 NY PMS 440 0025 PH H3 NY PMS 440 0025 PH H4 NY PMS 440 0025 PH

FID5 FID6 FID4 FID3 FID2 FID1

PCB Number: XX####
PCB Rev:

PCB
LOGO
Texas Instruments

You should delete the nylon screws/standoffs and/or the bumpers as needed for your design (or substitute other parts from Hardware.IntLib). Bumpers are cheaper, but provide less clearance.

Deleting anything else from this page may result in your EVM submission being rejected (until you add them back).

Update the Label Text in the Label Table as needed for each Assembly Variant.

You can delete this note too.

Label Table

Variant	Label Text
001	ChangeMe!
002	ChangeMe!

LBL1
PCB Label
Size: 0.65" x 0.20"

ZZ4
Label Assembly Note
This Assembly Note is for PCB labels only

ZZ3
Assembly Note
These assemblies are ESD sensitive, ESD precautions shall be observed.


ZZ1
Assembly Note
These assemblies must be clean and free from flux and all contaminants. Use of no clean flux is not acceptable.

ZZ2
Assembly Note
These assemblies must comply with workmanship standards IPC-A-610 Class 2, unless otherwise specified.

Texas Instruments and/or its licensors do not warrant the accuracy or completeness of this specification or any information contained therein. Texas Instruments and/or its licensors do not warrant that this design will meet the specifications, will be suitable for your application or fit for any particular purpose, or will operate in an implementation. Texas Instruments and/or its licensors do not warrant that the design is production worthy. You should completely validate and test your design implementation to confirm the system functionality for your application.

Designed for: Public Release		Mod. Date: 2/17/2014	
Project Title: TIDA-00226 (ISE5001)			
Sheet Title: MOUNTING HOLES, FIDUCIALS MARKING			
Assembly Variant: 001		Sheet 9 of 9	
File: Pcb_Hardware_ANSI-B_SchDoc		Size: B	
Contact: http://www.ti.com/support			

Number: XX#### Rev: E1
SVN Rev.: Not in version control
Drawn By:
Engineer:

 **TEXAS
INSTRUMENTS**
<http://www.ti.com>
© Texas Instruments 2014